

# HOLLAND LAKE BENCHMARK

State: Montana  
County: Missoula  
USGS Quad: Holland Lake  
Ownership: USFS, Flathead National Forest  
Swan Lake Ranger District

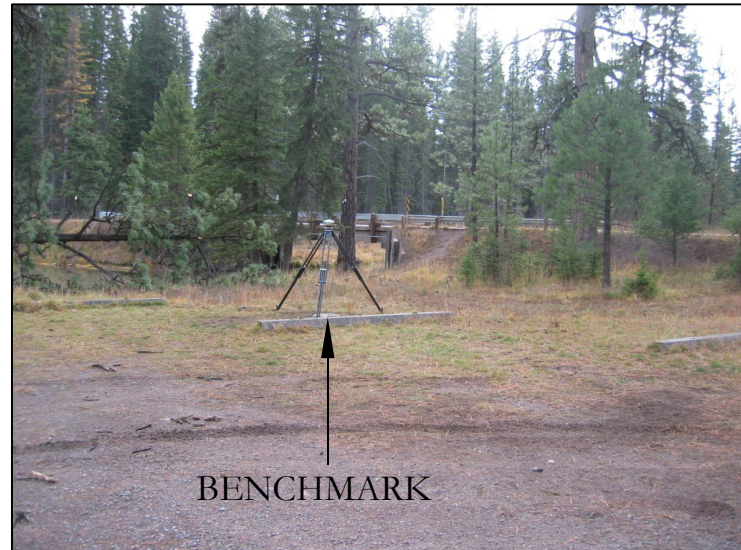
Latitude: 47°26'28.3452" N  
Longitude: 113°36'59.3554" W  
Elevation: 4040.51 International Feet  
Ellipsoid Height: 3994.89 International Feet  
Horizontal Datum: NAD 83 (2011)  
Vertical Datum: NAVD 88  
Geoid Model: GEOID18



The elevation was determined by static GPS observations, with ties to the following NGS stations: AI7922, AI7923, SU0026, SU0091, ST0439, DL6314, DI2254, and DE8232.

The monument is a 9/16" X 98' stainless steel rod, driven to refusal. There is a 36" long finned plastic, No-Tox grease-filled sleeve on the upper portion. This is encased in a sand filled 6" X 24" PVC pipe with aluminum access cover. The PVC pipe and cover are set in concrete.

This benchmark was established to help reference the Mean Annual High Water Elevation (MAHWE) of Holland Lake for regulatory purposes. The MAHWE of 4035.6 feet was calculated using crest gauge readings from 2021–2025. The elevation of the MAHWE is subject to change as more data is gathered and analyzed.



For more information, contact:  
Missoula County Public Works, Survey Division  
<https://www.missoulacounty.us/government/public-works/surveyors-office>

406-258-4870

Surveyed by Steve Niday & Corryn Greenawalt

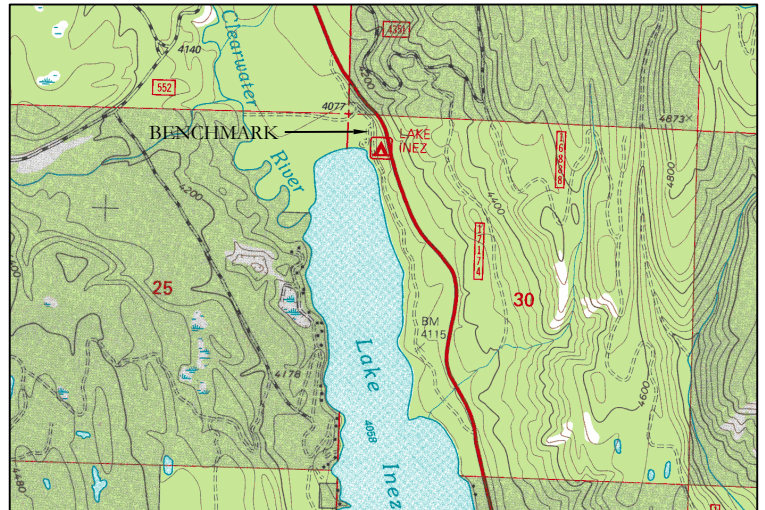




# LAKE INEZ BENCHMARK

State: Montana  
County: Missoula  
USGS Quad: Lake Inez  
Ownership: USFS, Lolo National Forest  
Seeley Lake Ranger District

Latitude: 47°17'42.2240" N  
Longitude: 113°34'06.5513" W  
Elevation: 4074.86 International Feet  
Ellipsoid Height: 4029.69 International Feet  
Horizontal Datum: NAD 83 (2011)  
Vertical Datum: NAVD 88  
Geoid Model: GEOID18



The elevation was determined by static GPS observations, with ties to the following NGS stations: AI7923, DI2254, DL6314, ST0418, SU0091, and DE8232.

The monument is a 9/16" X 48' stainless steel rod, driven to refusal. There is a 36" long finned plastic, No-Tox grease-filled sleeve on the upper portion. This is encased in a sand filled 6" X 24" PVC pipe with aluminum access cover. The PVC pipe and cover are set in concrete.

This benchmark was established to help reference the Mean Annual High Water Elevation (MAHWE) of Lake Inez for regulatory purposes. The MAHWE of 4063.5 feet was calculated using crest gauge readings from 2020–2025. The elevation of the MAHWE is subject to change as more data is gathered and analyzed.



For more information, contact:  
Missoula County Public Works, Survey Division  
<https://www.missoulacounty.us/government/public-works/surveyors-office>  
406-258-4870

Surveyed by Steve Niday & Corryn Greenawalt

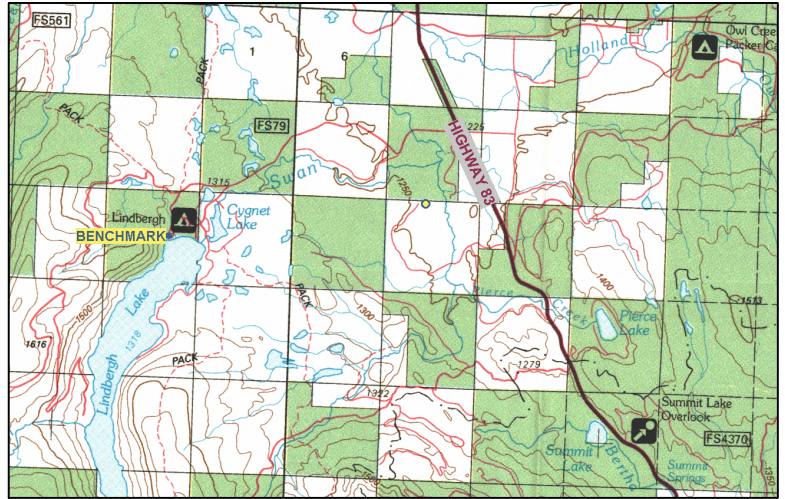




# LINDBERGH LAKE BENCHMARK

State: Montana  
County: Missoula  
USGS Quad: Cygnet Lake  
Ownership: USFS, Flathead NF

Latitude: 47°24'15.7079" N  
Longitude: 113°43'32.3705" W  
Elevation: 4334.12 International Feet  
Ellipsoid Height: 4288.65 International Feet  
Horizontal Datum: NAD 83 (2011)  
Vertical Datum: NAVD 88  
Geoid Model: GEOID18



The elevation was determined by static GPS observations, with ties to the following NGS stations: AI7922, AI7923, DE8232, DG9747, DI2254, ST0448, SU0026 & SU0091.

The monument is a 9/16" X 40' stainless steel rod, driven to refusal. There is a 36" long finned plastic, No-Tox grease filled, sleeve on the upper portion. This is encased in a sand filled 6" X 24" PVC pipe with aluminum access cover. The PVC pipe and cover is surrounded by concrete.

This benchmark was established to help reference the Mean Annual High Water Elevation (MAHWE) of Lindbergh Lake for regulatory purposes. The MAHWE of 4331.3 feet was calculated using crest gauge readings from 2021–2025. The elevation of the MAHWE is subject to change as more data is gathered and analyzed.



**LINDBERG-BM-3NA-20080926**



**LINDBERG-BM-3NB-20080926**



**LINDBERG-BM-1A-20080926**

For more information, contact:  
Missoula County Public Works, Survey Division  
<https://www.missoulacounty.us/government/public-works/surveyors-office>

406-258-4870



**LINDBERG-BM-1B-20080926**



# PLACID LAKE BENCHMARK

State: Montana  
County: Missoula  
USGS Quad: Belmont Point  
Ownership: Montana Fish, Wildlife & Parks  
Placid Lake State Park

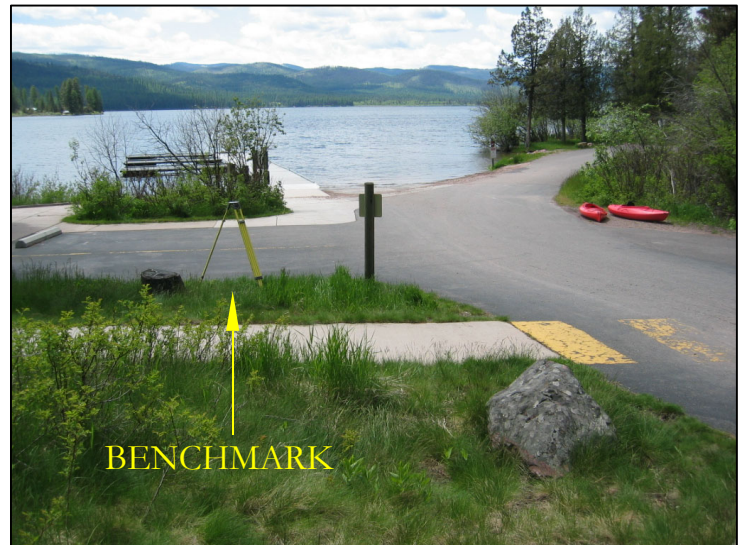
Latitude: 47°07'06.1960" N  
Longitude: 113°30'11.1536" W  
Elevation: 4129.59 International Feet  
Ellipsoid Height: 4084.18 International Feet  
Horizontal Datum: NAD 83 (2011)  
Vertical Datum: NAVD 88  
Geoid Model: GEOID18



The elevation was determined by static GPS observations, with ties to the following NGS stations: DI2254, ST0413, DL6314, ST0418, RX0663, and DE8232.

The monument is a 9/16" X 12' stainless steel rod, driven to refusal. There is a 36" long finned plastic, No-Tox grease-filled sleeve on the upper portion. This is encased in a sand filled 6" X 24" PVC pipe with aluminum access cover. The PVC pipe and cover are set in concrete.

This benchmark was established to help reference the Mean Annual High Water Elevation (MAHWE) of Placid Lake for regulatory purposes. The MAHWE of 4126.5 feet was calculated using crest gauge readings from 2021–2025. The elevation of the MAHWE is subject to change as more data is gathered and analyzed.



For more information, contact:  
Missoula County Public Works, Survey Division  
<https://www.missoulacounty.us/government/public-works/surveyors-office>

406-258-4870

Surveyed by Steve Niday & Corryn Greenawalt





# SALMON LAKE BENCHMARK

State: Montana  
County: Missoula  
USGS Quad: Salmon Lake  
Ownership: State of Montana  
Salmon Lake State Park

Latitude: 47°05'10.7652" N  
Longitude: 113°23'37.8645" W  
Elevation: 3922.73 International Feet  
Ellipsoid Height: 3877.50 Int. Ft  
Horizontal Datum: NAD 83 (2011)  
Vertical Datum: NAVD 88  
Geoid Model: GEOID18



The elevation was determined by static GPS observations, with ties to the following NGS stations: DE8232, RX0663, DL6314, and ST0413.

The monument is a 9/16" X 26' stainless steel rod, driven to refusal. There is a 36" long finned plastic, No-Tox grease-filled sleeve on the upper portion. This is encased in a sand filled 6" X 24" PVC pipe with aluminum access cover. The PVC pipe and cover are set in concrete.

This benchmark was established to help reference the Mean Annual High Water Elevation (MAHWE) of Salmon Lake for regulatory purposes. The MAHWE of 3913.6 feet was calculated using crest gauge readings from 2020–2025. The elevation of the MAHWE is subject to change as more data is gathered and analyzed.



For more information, contact:  
Missoula County Public Works, Survey Division  
<https://www.missoulacounty.us/government/public-works/surveyors-office>

406-258-4870

Surveyed by Steve Niday & Corryn Greenawalt

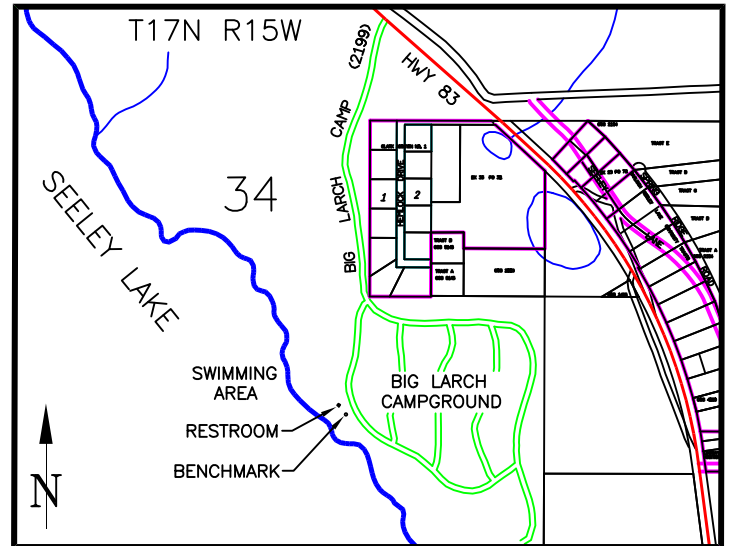




# SEELEY LAKE BENCHMARK

State: Montana  
County: Missoula  
USGS Quad: Seeley Lake East  
Ownership: USFS, Lolo National Forest  
Seeley Lake Ranger District

Latitude: 47°11'03.6108" N  
Longitude: 113°29'45.5005" W  
Elevation: 4005.26 International Feet  
Ellipsoid Height: 3959.91 International Feet  
Horizontal Datum: NAD 83 (2011) Epoch 2010.00  
Vertical Datum: NAVD 88  
Geoid Model: GEOID18



The elevation was determined by static GPS observations, with ties to the following NGS stations: ST0439, ST0644, ST0413, ST0418, RX0663, DE8232, SU0091.

The monument is a 9/16" X 80' stainless steel rod, driven to refusal. There is a 36" long finned plastic, No-Tox grease filled, sleeve on the upper portion. This is encased in a sand filled 6" X 24" PVC pipe with aluminum access cover. The PVC pipe and cover is set in concrete.

This benchmark was established to help reference the Mean Annual High Water Elevation (MAHWE) of Seeley Lake for regulatory purposes. The MAHWE of 3998.7 feet was calculated using crest gauge reading from 2019–2025. The elevation of the MAHWE is subject to change as more data is gathered and analyzed.



SEELEY LAKE BM-3NW-20091014



SEELEY LAKE BM-3SW-20091014

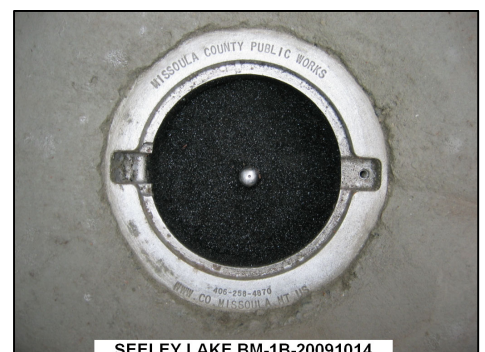


SEELEY LAKE BM-1A-20091014

For more information, contact:  
Missoula County Public Works, Survey Division  
<https://www.missoulacounty.us/government/public-works/surveyors-office>

406-258-4870

Surveyed by Steve Niday



SEELEY LAKE BM-1B-20091014